



Department of Revenue 181-00

Strategic Plan 2027-2031

1. AGENCY MISSION STATEMENT

The mission of the Department of Revenue is to foster compliance with Mississippi tax laws.

Statement of Purpose: The objective of DOR is to ensure that revenue is available to fund government programs. The Department of Revenue is required by law to:

- Administer the Revenue Laws.
- Ensure Equalization of Property Values.
- Administer Local Option Alcoholic Beverage Laws.
- Administer the Medical Cannabis Dispensary Laws.
- Administer the State's Motor Vehicle Registration and Title Laws.

2. STATEMENT OF AGENCY PHILOSOPHY

The Department of Revenue is accountable to all in the collection of revenue according to the provisions of Mississippi law. We will not assess or collect any tax or fee that is not lawfully due. We strive to work with our taxpayers (customers) to achieve the highest level of voluntary compliance.

Values and Principles: We strive to accomplish the mission efficiently and effectively with integrity while demonstrating courtesy toward those we serve.

Efficiently and Effectively:

Demonstrating professionalism, competence, resourcefulness, accountability and taking responsibility for our actions and performance.

Accomplish the Mission:

Be the mechanism through which the citizens of the State of Mississippi fund their public services.

With Integrity:

Committing ourselves to honest and ethical behavior.

Demonstrating Courtesy:

Honoring diversity and treating all people with respect.

To Those We Serve:

The citizens and taxpayers of the State of Mississippi.

3. RELEVANT STATEWIDE GOALS AND BENCHMARKS

The Department of Revenue indirectly supports **all** the state's goals through revenue collection for the General Fund and Special Funds. DOR collects 95% of the general fund revenue and these revenues are utilized by other agencies to provide services to the citizens of Mississippi.

All the core functions of DOR support the state's goal of creating "an efficient government."

STATEWIDE GOAL #1 Economic Development:

To develop a robust state economy that provides the opportunity for productive employment for all Mississippians

Relevant Benchmark #1:

State business tax climate (comparison of more than 100 variables across five major areas of taxation: business taxes, individual income taxes, sales taxes, unemployment insurance rates, and property taxes)

DOR activities include taxation, licensing, registration, administration of business incentive legislation, property valuation equalization, audit of county property rolls, industrial exemption review, regulatory duties, technical assistance to county offices, and training of county tax assessors.

STATEWIDE GOAL #2 Education - Public Schools:

To make available a quality K-12 public education for all Mississippians that prepares them, upon high school graduation, to either enter the labor force with an employable skill or to successfully complete a higher education program

Relevant Benchmark #2:

Cost

In FY 2025, DOR collected special funds including more than \$550 million for the Education Enhancement Fund, \$46 million for the School Ad Valorem Fund, and \$6.2 million for local school districts.

STATEWIDE GOAL #3 Education – Higher Education:

To make available an accessible, quality public higher education at an affordable cost that prepares Mississippians to become productive, financially self-sufficient members of society while meeting the human resource needs of Mississippi and its employers, including the creation of new jobs through the commercialization of university-based research

Relevant Benchmark #3:

Cost to Taxpayers

The state budget appropriates General Fund money to higher education.

STATEWIDE GOAL #4 Public Safety and Order:

To protect the public's safety, including providing timely and appropriate responses to emergencies and disasters and to operate a fair and effective system of justice

Relevant Benchmark #4:

Incidence of Crime

A primary component of the mission of ABC Enforcement includes reducing the opportunities for underage people to possess and consume beer and alcohol through an effective enforcement program.

Another component of the mission of the ABC Enforcement includes enforcing medical cannabis laws as they apply to the proper purchase, sale, and distribution of medical cannabis at dispensaries.

Emergency Preparedness

ABC Enforcement are first responders to emergencies resulting from natural or man-made disasters.

Judiciary, Correctional System, and Highway Safety are supported with General Fund appropriations.

STATEWIDE GOAL #5 Health:

To protect Mississippians from risks to public health and to provide them with the health-related information and access to quality healthcare necessary to increase the length and quality of their lives

Relevant Benchmark #5:

Access to Care

DOR collected \$12.1 million in special funds related to Hospitals and Hospital Schools and \$13.5 million in special funds for Trauma Care.

STATEWIDE GOAL #6 Human Services:

To ensure that Mississippians can develop to their full potential by having their basic needs met, including the need for adequate food and shelter and a healthy, stable, and nurturing family environment or a competent and caring system of social support

Relevant Benchmark #6:

Protective Services

Food Assistance

Temporary Assistance for Needy Families

Vocational Rehabilitation

DOR supports services to needy families in Mississippi through recovery of court ordered child support by intercepting tax refunds of those delinquent in child support.

STATEWIDE GOAL # 7 Natural Resources:

To ensure that current and future generations have access to the state's abundant natural resources through restoration, protection, conservation, and wise development of those resources

Relevant Benchmark #7:

Water

Air Quality

Land

State Parks

Wildlife and Fisheries

DOR collected \$53.8 million in special funds related to Conservation.

STATEWIDE GOAL #8 Infrastructure:

To ensure the construction and maintenance of infrastructure (including roadways, waterways, railways, airports, water and sewer systems, pipelines, electricity lines, broadband connections, public buildings) adequate to meet the needs of citizens and the business community and to foster economic growth

Relevant Benchmark #8:

Transportation

State Buildings

Public Utilities

DOR collected more than \$925 million in special funds for Transportation and State Aid Road.

STATEWIDE GOAL #9 Government and Citizens:

To create an efficient government and an informed and engaged citizenry that helps to address social problems through the payment of taxes, the election of capable leaders at all levels of government, and participation in charitable organizations through contributions and volunteerism

Relevant Benchmark #9:

- Administrative efficiency: expenditures on state government administrative activities as a percentage of total operational expenditures
- Average wait time for state government services
- Number and average cost of regulatory actions taken, by regulatory body and type of action
- State dollars saved by providing government services online (e.g. document retrieval, issuance of new business permits, license renewal)
- Percentage of state employees leaving state service within five years of employment

DOR collected over \$10.9 billion in FY 25, including general fund and special funds, designated for the support of state and local government services in Mississippi.

DOR expenditures are less than one cent for each dollar collected (.007 in FY 2025). DOR collected 94% of tax dollars electronically and 74% of income tax refunds were made by direct deposit.

4. OVERVIEW OF THE AGENCY 5-YEAR STRATEGIC PLAN:

The Mississippi Department of Revenue is responsible for the majority of revenue collection activities for the State, including taxation, licensing, registration, the wholesale distribution of alcoholic beverages, and administering the medical cannabis dispensary laws.

Tax revenues collected by DOR provide support for state operations by funding programs and services that benefit all citizens of Mississippi.

- DOR collected over 95% of the State's General Fund for Fiscal Year 2025. More than \$1.3 billion collected by DOR was paid directly to the municipal and county governments in the state. DOR collected and accounted for \$10.9 billion in total tax revenue derived from over 46 taxes from which collections were transferred to 75 Treasury Funds.
- The Department of Revenue has a relationship with every citizen and corporate entity of this state. Whether paying taxes or registering a vehicle, DOR's customer base is one of the largest of Mississippi's governmental agencies with more than 2 million taxpayers. All people and corporate entities with tax responsibilities to our state are customers, whether located within our borders or across the nation.

Over the course of the next five years, DOR will focus on a few main priorities:

- **Reduce the cost of collecting tax dollars due to internal efficiencies:**
 - Explore cost/benefit for outsourcing some DOR functions.
 - Continue to expand services and information offered electronically.
 - Increase voluntary compliance and collections of tax revenue.
- **Research and implement new methods to target tax refund fraud.**
- **Recruit and retain a skilled workforce:**
 - Request salary progressions.
 - Request funding for title changes.
 - Implement knowledge transfer and training program.
- **Continue to implement best known practices to enhance the security of electronic data and systems.**

Reduce the cost of collecting tax dollars due to internal efficiencies

Explore cost/benefit for outsourcing some DOR functions

DOR is continuing to explore outsourcing operations to provide a lower cost and operational efficiencies. DOR will move forward with new solutions for functions if vendor(s) can provide a better process and better results.

Continue to expand services and information offered electronically

We will continue implementing best practices to improve our technology platforms, will attempt to increase online availability of property information and continue implementation of strategies to improve taxpayer assistance. This expansion typically reduces costs due to the manpower required to respond to any type of written or telephonic request. If we can provide an effective answer or a way for the taxpayer, permittee or their representative to be able to serve themselves 24/7, we will reduce our costs and hopefully have a happier customer.

Increase voluntary compliance and collections of tax revenue

Increasing voluntary compliance and collections of tax revenue can be accomplished through an increase in taxpayer education and an increase in the presence of DOR. Both Revenue Officers, Auditors and support staff help educate taxpayers through their interactions. When taxpayers see auditors or officers working to increase compliance or when they have a positive experience with other staff in person or over the phone, there is likewise a positive effect on voluntary compliance. This helps DOR collect more tax revenue, whether from existing debt or from new taxpayers. DOR is constantly looking for ways to use data to efficiently collect revenue and locate taxpayers underreporting their tax liability. Communication efforts through social media,

applications, websites, in person training and printed media will continue to evolve as we find ways to better disseminate information to taxpayers and other stakeholders.

Research and implement new methods to target tax refund fraud

Combating tax refund fraud has been a focus for DOR for years. We unfortunately expect targeting refund fraud will always need to be one of our objectives. Fraudsters continue to develop new schemes, and we must do our best to keep up with them. Most of the data breaches you see in the news, and many that never receive that type of publicity, offer fraudsters with that data the potential for a tax refund from one or multiple states. DOR regularly meets with other state tax administrators and the IRS to develop and share best practices and works to implement those practices. We analyze the data we receive to discover new fraud schemes.

Recruiting and retaining a skilled workforce

Request salary progressions

DOR plans to pursue salary progressions in future years as recommended by SPB for the DOR specific job classifications. We believe those progressions are needed to recruit and retain a skilled workforce. DOR has implemented performance measures for its employees and is using those measures as we should to monitor employee performance and development.

Request funding for title changes

A salary progression will help us in recruiting employees and retaining the ones we have. To continue to retain those good employees, we also need funding in future years for title changes for the employees whose job duties have changed. Performance measures will not work long-term if you do not reward productivity.

Continue implementation of knowledge transfer and training program

To further assist with creating that skilled workforce, DOR will continue to develop a comprehensive employee training and knowledge transfer program. Part of retaining good employees is getting them engaged in the agency's mission. We need to equip employees with the information and resources they need to do a good job.

Continue to implement best known practices to enhance the security of electronic data and systems

The position of Chief Security Officer was created at DOR to provide better focus and direction for keeping data secure. Security is everyone's job, but the agency needed someone to lead the effort. There are data breaches in the news almost daily. Because of the Personally Identifiable Information (PII) stored at DOR, we consider ourselves a target, and we must act accordingly. We attempt to take every precaution to protect information in our systems. DOR has been able to procure an intrusion detection and protection monitoring service that we believe is necessary to do the best job of safeguarding taxpayer data. We hope to continue the service in FY2027 and beyond.

Continue to Offer in Compromise program for taxpayers

DOR continues to make available an Offer in Compromise program for taxpayers. This program assists the DOR in collecting liabilities for taxpayers who otherwise would not be able to pay their debt and provide a fresh start for those taxpayers.

Continue to create Quality Assurance program for employees

To support the DOR mission, values, and principles a robust quality assurance initiative will enhance delivery of agency services and strengthen accountability for actions and performance. The agency is accountable to internal and external customers for efficient and effective service. Our Quality Assurance initiative will enable the agency to focus efforts to deliver superior customer satisfaction. Consistent delivery of superior service requires trained associates dedicated to continuous improvement, focused management practices, effective communications, objective evaluation of customer's experiences, and expeditious corrective action where appropriate.

5. EXTERNAL/ INTERNAL ASSESSMENT:

The management of the MS Department of Revenue is aware of both external and internal influences affecting our ability to reach performance goals. These concerns are based on circumstances outside our control: political conditions, economic conditions, and increased criminal activity.

- One risk to our mission and collection of general and special fund money for the state is whether DOR receives adequate funding and the approval to spend part of that funding to increase the salaries for employees that meet their performance measures.
- Technology has transformed how we conduct business. Effectively and efficiently accomplishing our mission requires us to pursue electronic solutions, modern tools, and technologies. Regardless of how the information is received, either by paper or electronically, the information maintained by this agency must be secured. Security and privacy must be maintained and protected throughout the entire life cycle of the data/information.

There are an increasing number of fraud and criminal cases, a national trend also affecting this state. Criminals are utilizing technology and/or information obtained through identity theft to steal millions from the state each year.

- We will hire for any vacancies in the priority positions of Revenue Officers and Auditors as well as replacing any who leave. These positions will continue to be the priority, but if we do not have funding for them, the result will be lost state revenue and reduced service to the public.
- Strategies to improve compliance require experienced professional and support staff; however, DOR cannot retain enough people to fill the gaps created when experienced people leave. Failure to retain trained employees directly impacts results. There are too few advancement opportunities for professional staff, and we are unable to match or compete with the salaries of the private sector. This creates difficulty attracting and retaining accountants, information technology personnel, attorneys, revenue officers, and investigators. An inadequate number of people performing the work adversely affects operational efficiency and effectiveness.

Independent audits or reports regarding performance goals:

- DOR is required to report annually to the Internal Revenue Service concerning compliance with record keeping, physical security, and systems security of the federal tax information maintained and utilized. On-site review by the IRS occurs every three years. The next on-site review is scheduled for April 2028. The findings from the last review in 2025 were very good for both technical and procedural safeguards. Any failure of this review can result in IRS no longer providing federal tax information. Use of this information provides millions in state tax revenue each year.
- DOR contracted with a vendor to perform a System Vulnerability Scan and Penetration Testing. Our overall security posture was rated as good, but that does not mean there wasn't room for improvement. We will remedy the issues identified and continue to have this type of test performed yearly. Security is a major concern at the DOR and will expect to continue the improvement of our security.
- IFTA (International Fuel Tax Agreement) and IRP (International Registration Plan) audits DOR on five-year cycles for our compliance with the agreements. Both organizations perform comprehensive program reviews of DOR's performance regarding Clearinghouse reporting, registration compliance, refusing/canceling credentials, and taxpayer audit requirements. Failure to meet mandatory targets can result in sanctions, including withholding Federal Highway Trust Funds.
- The Office of the State Auditor performs an annual financial audit of accounting records and tax administration processes for agency performance regarding internal controls, financial disclosure, and Mississippi law. Additionally, OSA performs an information system audit, and a security and contingency planning audit related to DOR performance regarding access and use of its information systems and security of data.
- The Mississippi Department of Information Technology Systems requires DOR to follow the Enterprise Security Plan and submit an Information Technology Plan annually.
- The Mississippi Department of Finance requires GAAP reporting for the annual Mississippi Annual Comprehensive Financial Report (ACFR) and Office of Financial Management requires the annual Internal Control Risk Assessment which is a comprehensive review of transaction controls and process controls throughout the agency.

5(A). The agency's internal management system is utilized to evaluate performance achievement:

The agency has worked with PEER staff to create an inventory of accountability programs and meaningful performance measures for those programs. The measures, costs and FTEs for those programs were reported to PEER beginning with FY2016 and will continue to be reported annually. The agency also requested high level performance measures in the appropriation bill hoping to provide more accountability and transparency as to how the agency spends its appropriation.

- Collecting data is the key component to development of performance measurements and the subsequent reporting of outcomes. DOR employs several methods for collecting performance data, primarily electronic tracking and, to a lesser degree, self-reporting by employees.

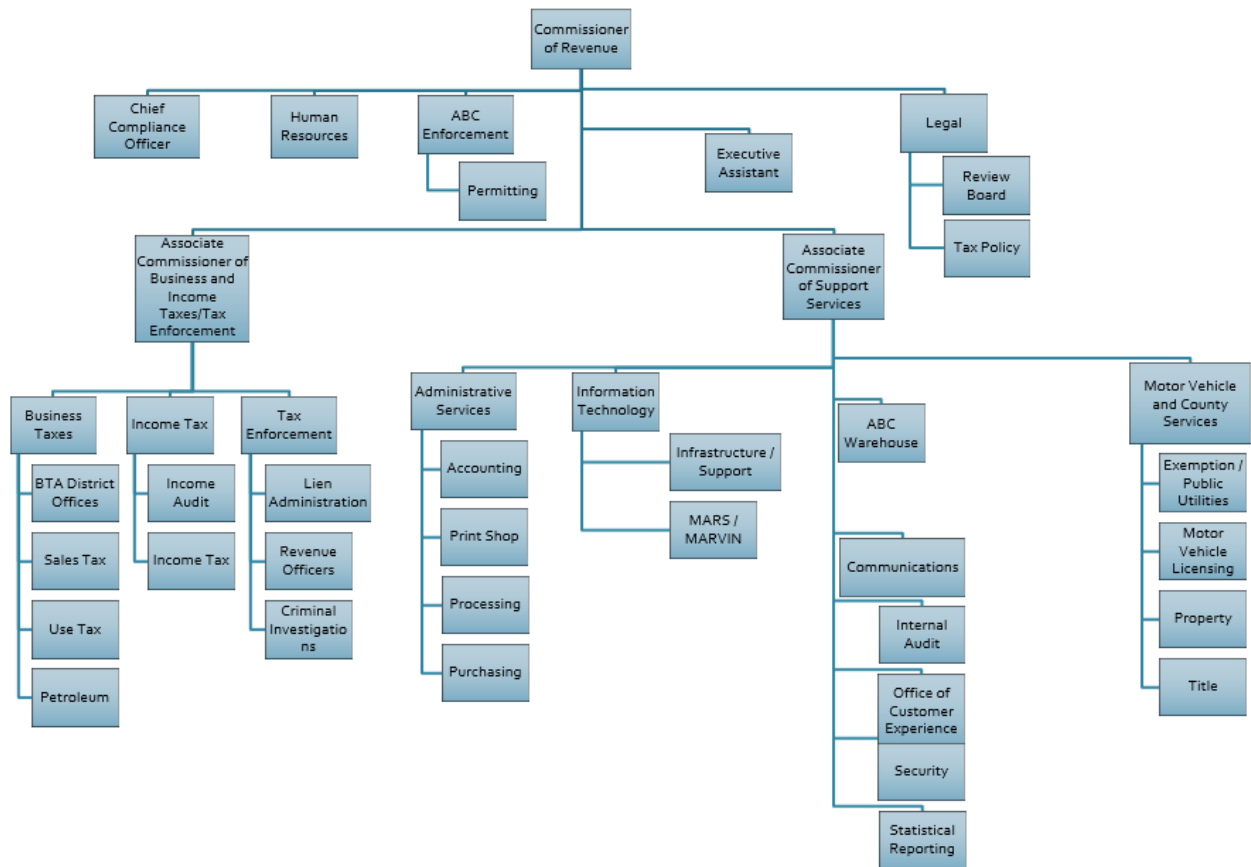
- MARS (integrated tax management system) provides more information to track performance. This information not only measures output but helps improve efficiency with regard to time management and expenses. DOR employees manually collect data when automated systems lack reporting functionality. MARS reports are routinely created by the system and emailed to agency supervisors. Program data is consolidated into a Key Performance Measures Executive Summary each month.
- The Executive Team establishes key performance measurements using information systems data and manual data reported by each program. For our stated program goals, we set objectives or benchmarks we wish to attain. We make sure we have in place the strategies to achieve those objectives and that there are clear measurements that can be monitored to ensure we have the output, efficiencies and outcomes needed to determine if our program is functioning at its maximum. If not, we adjust and monitor to arrive at the best possible use of our resources.
- To ensure a focused and cooperative effort, measurable goals/targets are incorporated into employee evaluation standards. Individual duty statements were reviewed, and measurable goals established where possible. MARS generates management reports that provide the number of items by task type performed by each employee assigned that duty. The reports also assist supervisors making work assignments or identifying areas where we may need to shift resources.
- Executive and Senior management monitor programs for efficiency and effectiveness through routine reporting and meetings:
 - Monthly Executive Staff meetings and Semi-Monthly Senior Staff meetings are held to discuss areas that are holding up progress or causing a lag in the work process.
 - Quarterly, extended staff is included in the meetings.
 - Executive Staff regularly meets with their management team to review the successful areas and the problem areas, identify what makes the successes, and work out solutions to correct the problems.
 - Month-to-date and year-to-date expenditures reports with budgetary comparisons are created monthly and sent to Executive Staff members for their review.

5 (A)(3) Organizational Structure:

The Commissioner of Revenue is the Executive Director of the Department. He is appointed by the Governor and confirmed by the Senate to serve a term of six years. Assisting the Commissioner in administering the duties of the agency are the Chief Legal Counsel, Associate Commissioner of Business and Income Taxes and Tax Enforcement, Associate Commissioner of Support Services, Director of Human Resources and Chief Compliance Officer ABC Warehouse Operations.

DOR accomplishes its mission through various programs focused on implementing tax laws, processing tax revenue, and providing services to state government and the general public. The agency is an interconnected organization dedicated to continuous improvement.

The following organization chart identifies the basic functional areas that complete the work of the agency:



6. AGENCY GOALS, OBJECTIVES, STRATEGIES, AND MEASURES BY PROGRAM:

STATUTORY AUTHORITY FOR GOALS:

MCA §27-3-1, et al, creates the Department of Revenue. Authority to perform its functions is found throughout the Code. The more important of those sections that set forth DOR requirements include, but is not limited to, the following:

Sales Tax §27-65-13	Compressed Gas §27-59-307
Use Tax §27-67-5	Compressed Gas §27-59-49
Amusement or Admissions Tax §27-65-22	Locomotive Fuel §27-59-307, §27-59-321
Contractor's Tax §21-65-21	Sea Wall §65-33-47
Casual Auto Sales §27-65-201	Compressed Gas §27-59-11(3), §27-59-11(4)
City Utility Tax §21-33-201	International Fuel Tax Agreement (IFTA) §27-61-20
Motor Vehicle Rental Tax §27-65-231	Titles Motor Vehicles and Manufactured Homes §63-21-3
Occupancy Tax, various	International Registration Plan (IRP) §27-19-143
Tourism and Economic Development Taxes (78 Levies)	Road and Bridge Privilege Tax §27-19-1
Waste Tire Disposal Fee §17-17-423(1)	Private carrier of passengers §27-19-5, §27-19-5
Income Tax §27-7-5	Church or School Bus §27-19-9
S Corporations §27-8-7	Trailer Tags §27-19-17
Franchise §27-13-5, §27-13-7	Dealer Tags §27-19-309(7)
Withholding §27-7-305	Registration §27-19-43(3)(a) and (b)
Estimate Payments §27-7-319	Alcoholic Beverages Excise Tax §27-71-7
Withholding Gaming Winnings §27-7-901, §27-7-903	Alcoholic Beverages Permit Fees §27-7-5
Estate Tax §27-9-5	Alcoholic Beverages Mark-up §27-7-11
Gasoline §27-55-11	Native Wine §67-5-13
Aviation Fuel §27-55-11	Beer and Light Wine §27-71-307
Un-dyed Diesel §27-55-519, §27-55-521	Beer Permits §27-71-303
Dyed Diesel §27-55-519	Tobacco, Cigarettes §27-69-13(a)
Aircraft Fuel §27-55-519	Other Tobacco Products §27-69-13(b)
Compressed Gas/Motor Fuel §27-59-11	Non-Settling Tobacco Manufacturers §27-70-5
Compressed Natural Gas /Motor Fuel §27-59-11	Insurance Premium §27-15-103
Lubricating Oil §27-57-11	State Fire Academy Tax §45-11-5(1)
Environmental Protection Fee §49-17-407(2)	County and Municipal Volunteer Fire Department Tax §45-11-5(3)
Propane Education §75-57-119	Fireman and Police Tax §21-29-229

Gaming §75-76-183	Non-hazardous Waste §17-17-219
License Fee (Gaming Manufacturer, Seller or Distributor) §75-76-79	Municipal Gas Utility §77-11-201
License Fee Based on Number of Games §75-76-191	Railroad Regulatory §77-9-493
Gross Revenue Fee §75-76-177	Statewide Privilege Tax Telephones §27-15-153
Municipal/County Fee §75-76-195	Statewide Privilege Tax Railroad §27-15-157
City/County Gross Revenue Tax (14 local levies)	Statewide Privilege Tax Pipeline §27-15-165
Gas Severance §27-25-703	Statewide Privilege Tax Electrical Company §27-15-155
Oil Severance §27-25-503	Utility Regulatory Tax §77-3-87
Timber Severance §27-25-1	Homestead Exemption §27-33-1
E- 911 §19-5-357	Industrial Exemptions §27-31-101
Prepaid Wireless Charge §19-5-343	Nuclear in lieu Tax §27-35-309
Fantasy Contest Act Fee §97-33-317	Rail Car in Lieu §27-35-515
Hazardous Waste §17-17-53	Legislative Tag Credit §27-51-101
Installment Loan (Finance Privilege) §27-21-3	TVA in lieu §27-37-30
	Medical Cannabis Tax §27-72-1

GOALS, OBJECTIVES AND STRATEGIES BY PROGRAM

PROGRAM 1: TAX ADMINISTRATION

GOAL A: Fairly and equitably administer the revenue laws that fund state and local government operations.

OBJECTIVE A.1. Improve voluntary compliance with all Mississippi tax laws, rules and regulations by promoting correct and timely reporting and payment of taxes

Outcome: Percentage of phone calls answered

A.1.1. STRATEGY: Actively manage work item load and shift staff focus when needed

Efficiency: Cost per unit of work (item/case/call)

A.1.2. STRATEGY: Actively manage call queues and shift staff focus when needed

Output: Call Center number of phone calls answered

Efficiency: Cost per call center call answered

PROGRAM 2: AUDIT

GOAL A: Ensure that taxpayers are accurately reporting and paying their taxes, provide discovery of under-reporting and non-reporting taxpayers and increase voluntary compliance with all Mississippi tax laws, rules and regulations

OBJECTIVE A.1 Identify unreported taxes using best practices from our agency and other states and use technology when possible, to find areas or industries who under-report tax due

Outcome: % of audit goal

A.1.1. STRATEGY: Maintain an ongoing program of audit activities that provide a sufficient level of audit coverage

Output: Number of audits conducted

Efficiency: Cost per audit

Efficiency: Tax Production per audit

PROGRAM 3: TAX ENFORCEMENT

GOAL A: Enforce the tax laws administered by the Department of Revenue relating to taxpayers filing returns and paying liabilities, and identifying non-registered taxpayers

OBJECTIVE A.1: Employ best practices in revenue officer actions and in use of technology to collect finally determined liabilities by determining the most collectible debts and best collection action to take based on the age, timing and taxpayer for the debt

Outcome: Recovery per dollar expended

A.1.1. STRATEGY: Maintain percent of bill items closed above 4.6% of total bill items

Output: Dollars collected in recovery actions

Efficiency: Cost per dollar collected in recovery actions

PROGRAM 4: GENERAL ADMINISTRATION

GOAL A: Provide legal representation and advice to DOR, human resources support service, administer the tax review board, issue letter rulings and declaratory opinions and provide public relations for DOR

OBJECTIVE A.1. Distribute revenue timely and accurately to provide funding for public services

Outcome: ROI – Revenue collected per dollar of expense

A.1.1. STRATEGY: Process payments and returns as quickly as possible

Output : Total number of returns processed

Efficiency: Average cost per return processed

PROGRAM 5: PROPERTY AND MOTOR VEHICLE SERVICES

GOAL A: Ensure equalization of property values through the state and ensure all motor vehicle registration and title information is accurate

OBJECTIVE A.1. Accurately report property values and homestead exemptions

Outcome: Percent of homestead applications denied based on review by DOR staff

A.1.1. STRATEGY: Review Homestead application data for compliance

Efficiency: Cost per homestead exemption application

OBJECTIVE A.2. Ensure the integrity, security and availability of vehicle information

Outcome: Average number of titles issued per day

A.2.1. STRATEGY: Process title applications as quickly as possible

Output: Number of titles issued

Efficiency: Cost per title issued

PROGRAM 6: ALCOHOL BEVERAGE CONTROL LIQUOR DISTRIBUTION CENTER

GOAL A: Administer the Local Option Alcoholic Beverage Laws providing the state with an effective regulatory system for alcohol

OBJECTIVE A.1. Ensure timely and accurate delivery of alcoholic beverages to permitted businesses

Outcome: ROI – GF dollars returned per dollar of cost

A.1.1 STRATEGY: Keep shipping errors to less than 2%

Output: Number of cases shipped

Efficiency: Cost per case shipped

PROGRAM 7: ENFORCEMENT

GOAL A: Enforce the Local Option Alcoholic Beverage Laws and Medical Cannabis Dispensary Laws providing the state with an effective regulatory system for alcohol and medical cannabis.

OBJECTIVE A.1. Process permit applications as quickly as possible

Outcome: Percent of medical cannabis permits receiving administrative action

Outcome: Percent of medical cannabis permits receiving criminal action

Outcome: Percent of medical cannabis permits inspected

Outcome: Percent of permit applications approved- medical cannabis

A.1.1 STRATEGY: Keep average days to issue permits below 30

Output: Number of permits – Medical Cannabis

Output: Number of violations – Medical Cannabis

Output: Number of Permits - Alcohol

Efficiency: Enforcement and Permitting cost per permit - Alcohol

Efficiency: Average number of days to issue permit – alcohol

Efficiency: Average number of days to issue permit – Medical Cannabis

Efficiency: Enforcement and Permitting cost per permit – Medical Cannabis